

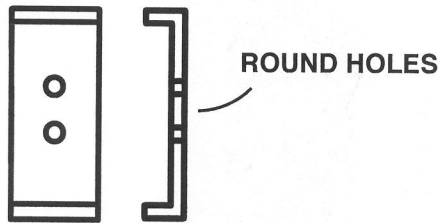
WILDERNESS PRODUCTS

FJ CRUISER FACTORY ROOF RACK
 HI-LIFT JACK MOUNT
 PART # 55900



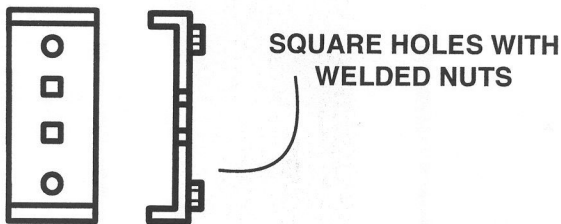
PARTS LIST

2 - INNER SUPPORT BRACKETS
 (ROOF RACK) (2" WIDE)
 (REFER TO FIGURE 1)



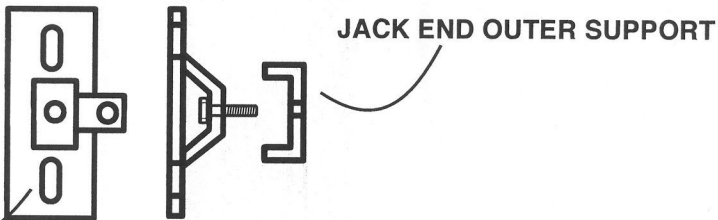
ROUND HOLES

2 - OUTER SUPPORT BRACKETS
 (ROOF RACK) (2" WIDE)
 (REFER TO FIGURE 1)



SQUARE HOLES WITH
 WELDED NUTS

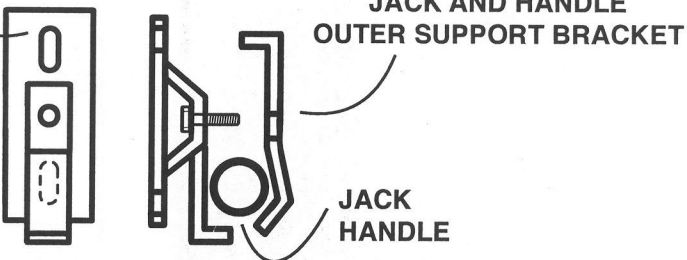
1 - JACK END INNER SUPPORT
 BRACKET (LEFT SIDE)
 (2" WIDE) (REFER TO FIGURE 2)



JACK END OUTER SUPPORT

OVAL HOLES

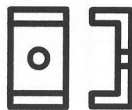
1 - HANDLE END INNER
 SUPPORT BRACKET
 (RIGHT SIDE) 2" WIDE
 (REFER TO FIGURE 3)



JACK AND HANDLE
 OUTER SUPPORT BRACKET

JACK
 HANDLE

1 - JACK END OUTER
 SUPPORT (1 1/2" WIDE)
 (REFER TO FIGURE 2)



1 - HANDLE OUTER SUPPORT
 BRACKET (1 1/2" WIDE)
 (REFER TO FIGURE 3)



MOUNTING HARDWARE LIST

- 4 - 3/8 X 3 CARRIAGE BOLTS
- 4 - 3/8 X 1 BOLTS
- 4 - 3/8 LOCKWASHERS
- 4 - 3/8 NYLON LOCKNUTS
- 8 - 3/8 SAE FLATWASHERS (13/16" DIA.)
- 2 - 1/2 SAE FLATWASHERS (1 1/16" DIA.)
- 2 - 1/2 LOCKWASHERS
- 2 - 1/2 WINGNUTS

WILDERNESS PRODUCTS

PART # 55900

FJ CRUISER FACTORY ROOF RACK HI-LIFT JACK MOUNT



INSTALLATION INSTRUCTIONS

Page 2 of 2

- 1 - INSTALL INNER AND OUTER ROOF RACK SUPPORT BRACKETS TO FACTORY ROOF RACK AS SHOWN IN FIGURE 1. SPACE SUPPORTS APPROX. 15" to 18" APART, SLIGHTLY TIGHTEN TO HOLD IN PLACE.
- 2 - INSTALL BOTH JACK END & HANDLE END SUPPORTS TO THE ROOF RACK OUTER SUPPORT BRACKETS.
- 3 - ADJUST MOUNTING BRACKETS SO THE 1/2" BOLT GOES THROUGH JACK AS SHOWN IN FIGURES 2 & 3 TIGHTEN ALL MOUNTING BRACKET HARDWARE.
- 4 - SECURE JACK TO MOUNTING BRACKETS AS SHOWN IN FIGURES 2 & 3, TIGHTEN 1/2" WING NUTS, CHECK WING NUTS ON A REGULAR BASES TO INSURE WING NUTS DO NOT VIBRATE LOOSE.

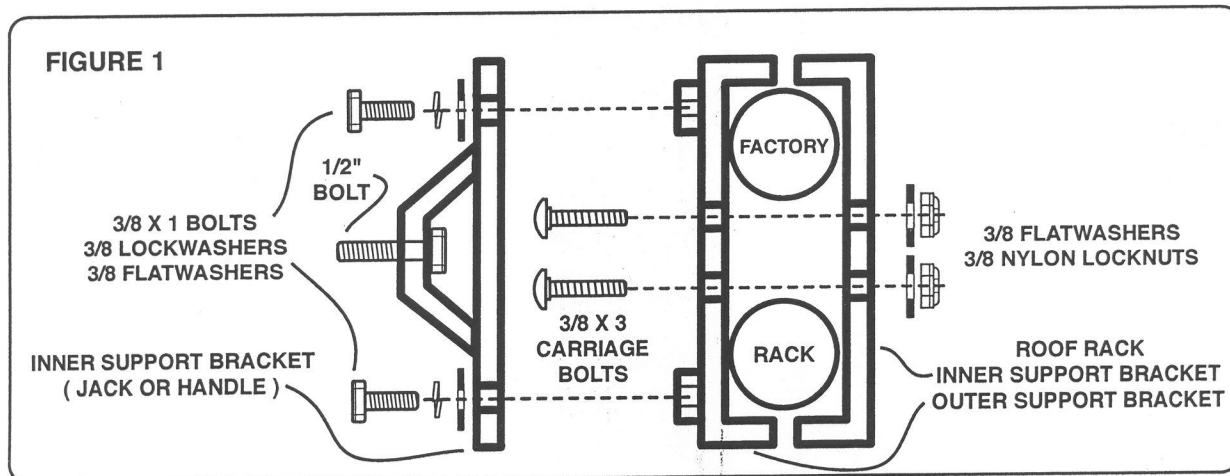


FIGURE 2

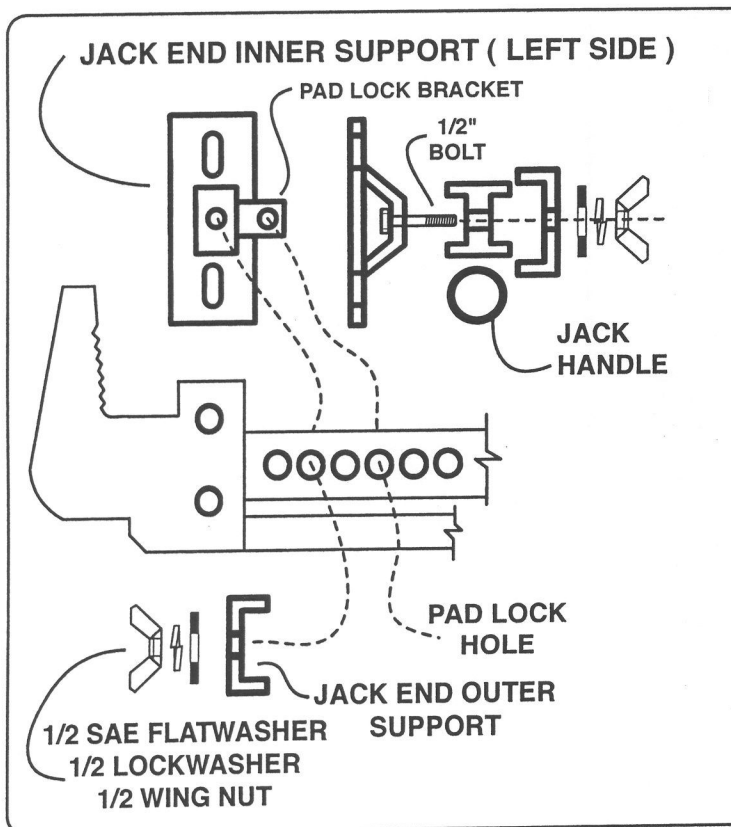


FIGURE 3

